

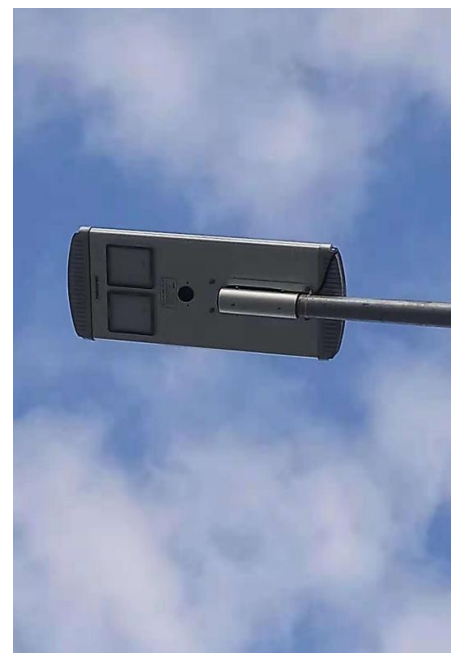
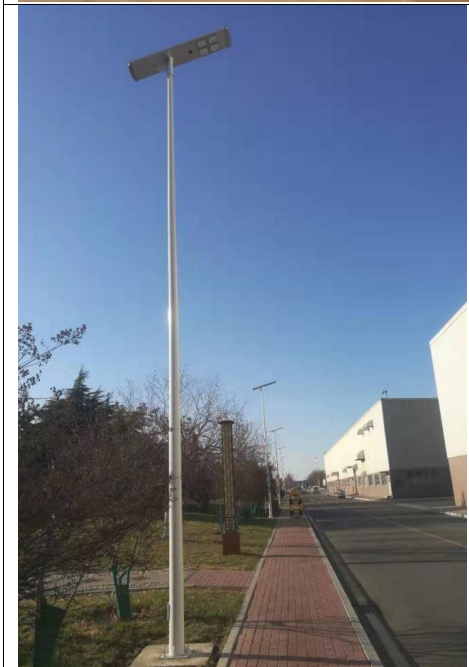
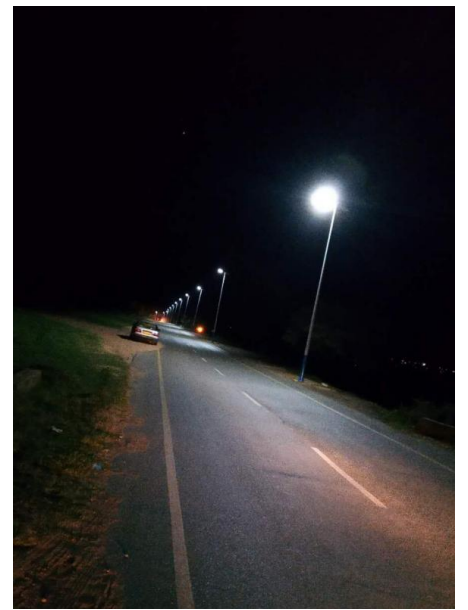
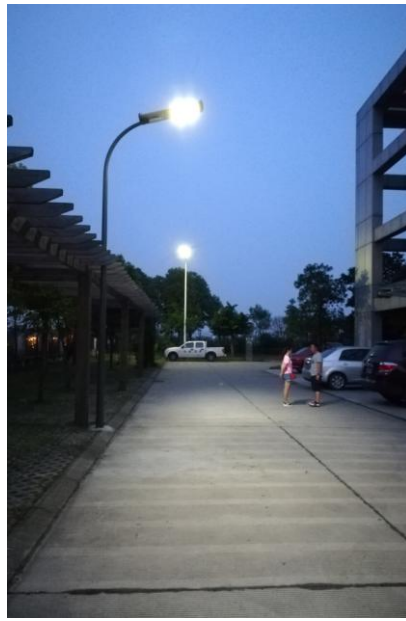
NEPTUNE 50W INTERGRATED ALL IN ONE SOLAR STREET LIGHT



Technical Parameters:

Type Model	GL-NE-50W	
Lumen	170LM/W	
Color temperature	3000K 4000K 5000K 6000K 7000K	
Material+appearance treatment	High end aluminum alloy+Anodizing	
Lithium battery	LifePO4 battery 12.8V (400WH)	
Solar panel	High efficiency mono solar panel 18V (70W)	
LED chip	Original CREE 3030 led chip	
IP grade	IP65	
Discharge time	12hours lighting per day with motion sensor, support 10-12 rainy and cloudy days	
Charging time	6-7hours (bright sunshine)	
Install diameter	Φ 60-65mm(Advice)	
Working temperature	-25℃ — +65℃	
Dimension	1190*385*180mm	
Warranty	3 years	
Remote control	Yes	
Color rendering index	Ra ≥ 80	
Solar lights controller status indicator	LED indicator status	Indicator light description
	Red (Flicker)	Solar panel is charging the battery
	Red (On)	Battery charged to full power
	Blue (Off)	Battery without output
	Green (On)	Light on

ONSITE



PRODUCTION



PACKAGE

