

## NEPTUNE 30W INTERGRATED ALL IN ONE SOLAR STREET LIGHT



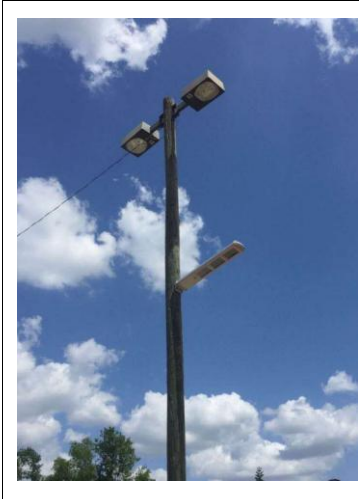
### **Product Feature :**

- 1.High class Integrated die-casting Aluminum alloy case .
- 2.Lighting mode with motion sensor
- 3.120° view angle
- 4.Over 3 nights lighting after full charge
- 5.Easy to install,Auto on/off
- 6.With remote control , UVA technology , bring high corrosion resistance , 30m remote control operation , increase/decrease the brightness.

### **Technology specification :**

1. Lumen : 3000LM ( 30W chips3030 )
2. Solar panel: 35W/18V High Efficiency Mono-crystalline Silicon
3. Lithium battery : 252WH
4. LED Lamp : 1PCS LED Lamp/Each 24PCS LED Chips
5. Waterproof : IP65
6. Working temperature : -25°C~65°C
7. Material : Aluminium alloy
8. Charging : 6-10hours by bright sunshine
9. Remote control : Yes
10. Install Pole diameter : 60-65MM
11. Mounting Height : 4-5M ( distance14-17M )
12. Warranty : 3years

ONSITE



PRODUCTION



PACKAGE

